

1. Propulsion Identification



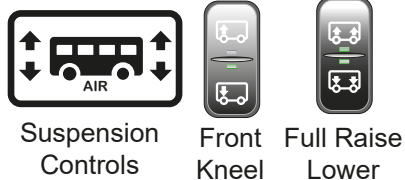
Li-Ion / NMC Battery - Electric bus with optional overhead pantograph charging.

CAUTION:
Lack of noise does not mean vehicle is off:
Silent movement or instant restart capability exists until vehicle is fully shut down

Model Identification:

If present, the manufacturer logo is displayed at centre of the front of the bus. The rear panel may show the model name. Enviro400EV Enviro400EV

2. Immobilisation / Stabilisation / Lifting



Suspension height controls on driver's console.

WARNING:
In the event of electrical failure, the Electronic Parking Brake will not respond and wheel chocks **MUST** be used to prevent runaway.



3. Disable Direct Hazards

Safe Vehicle Shutdown Procedure

1

SELECT NEUTRAL

2

APPLY PARK BRAKE

3

TURN OFF IGNITION

WAIT 10 SECS

4

TURN OFF MASTER SWITCH

To confirm when vehicle is powered fully off:

- No illumination on instrument cluster and No lights on master or Ignition switches



HV Isolation

Safety Isolation:
Lock out all electrical systems



Maximum Ø6mm Hasp

Secure with a padlock.

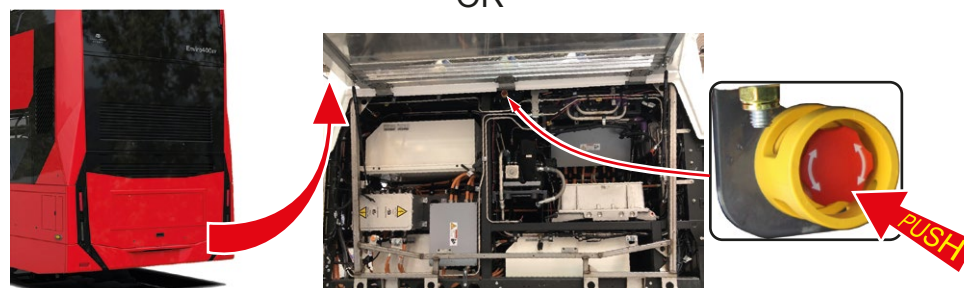
Emergency Stop Switches



OR



OR



4. Access to the Occupants



Escape Glass in side elevation windows (and optional skylights).

1 To open the doors from outside, push the emergency button.

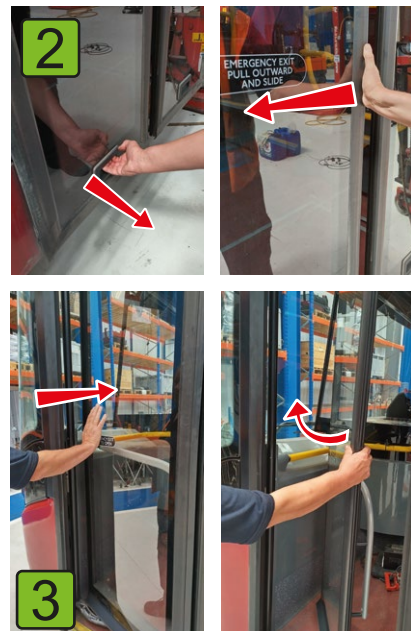
To open the doors from inside, push the emergency button located near the top edge of the doors.

Lift the flap and push the button to release the doors.

If the doors do not operate they can be pushed open manually.

2 Centre / Exit doors:
Pull the door outwards using the handle at the bottom then Slide the doors open.

3 Front/entrance doors:
Push the outer edge inwards, then pivot the door into the bus.



5. Stored Energy / Gases



750V Li-Ion

All High Voltage cables have **orange** insulation

Coolant is **BLUE**



Refrigerant.
HFO-R407C



Do not cut **orange cables** or open high voltage enclosures.



Ethylene Glycol
Hazards: H302, H373

Contact with liquid or refrigerated gas can cause cold burns and frostbite.

6. In Case of Fire



Thermal Fire
Detection Recommended



Do not spray water directly into the Drive Bay.

Battery Product identification:

NMC lithium-ion battery pack

Chemical Class:

ADR Class 9 – miscellaneous dangerous goods.

DO NOT USE WATER ON BATTERY FIRES:

C02, metal fire-ex powder or dry powder fire extinguishers are acceptable.

WARNING: Do not submerge vehicle to extinguish fire.

Auto fire suppression in drive bay.

Battery Re-Ignition

Where a battery fire is experienced or suspected, monitor for at least 48 hours with thermal fire detection equipment.

7. In Case of Submersion



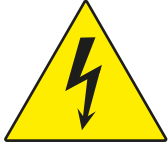
Isolate HV



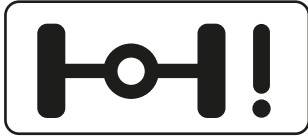
As for **Section 3 - Disable direct hazards.**

Follow safety routines once out of water.

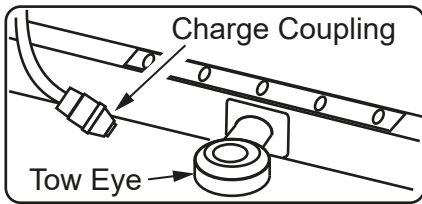
8. Towing / Recovery



Ensure vehicle is in neutral then isolated.
Apply wheel chocks to prevent movement.
Wind off park brake actuators to release park brake.



Remove half-shafts or drive shaft when towing.
or
Elevate and support drive axle.

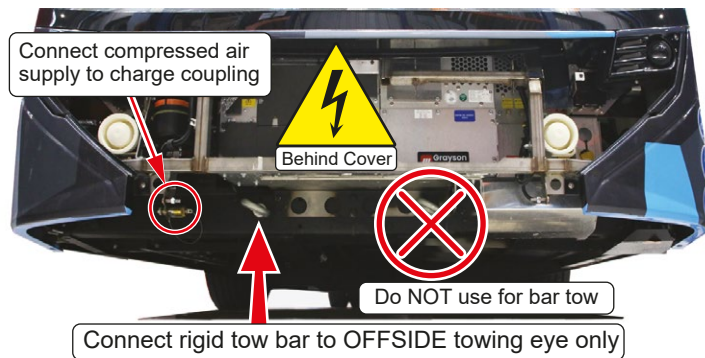


Connect tow bar to OFFSIDE towing eye only.
or
Use A-frame on both towing points at front.

Connect air to Charge Coupling if necessary



Twist locks to release front panel



Open panel and lift out and away from the clips

**For rigid bar towing, only the OFFSIDE eye must be used, as indicated, to prevent damage to the front components.
The vehicle may be towed using both front towing points and an A-Frame.**

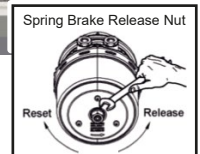
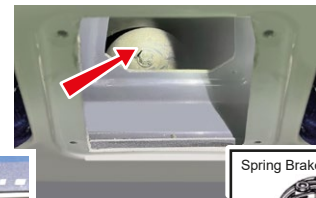
CHOCK WHEELS BEFORE PROCEEDING



⚠WARNING:
In this condition the brakes are completely inoperative.
Wheels **MUST** be chocked.

MANUAL PARK BRAKE RELEASE

ACCESS BETWEEN REAR SEATS



9. Contact Information

Alexander Dennis
Contact details for more information

✉ email: info@alexander-dennis.com

Alexander Dennis
Trident House, 2 Voyager Park
Dingley Way, Farnborough
GU14 6FF. United Kingdom
Telephone: + 44 (0)1483 571271

Alexander Dennis
9 Central Boulevard
Central Park, Larbert
FK5 4RU. United Kingdom
Telephone: +44 (0) 845 358 9988